

MENLO



M A L I K



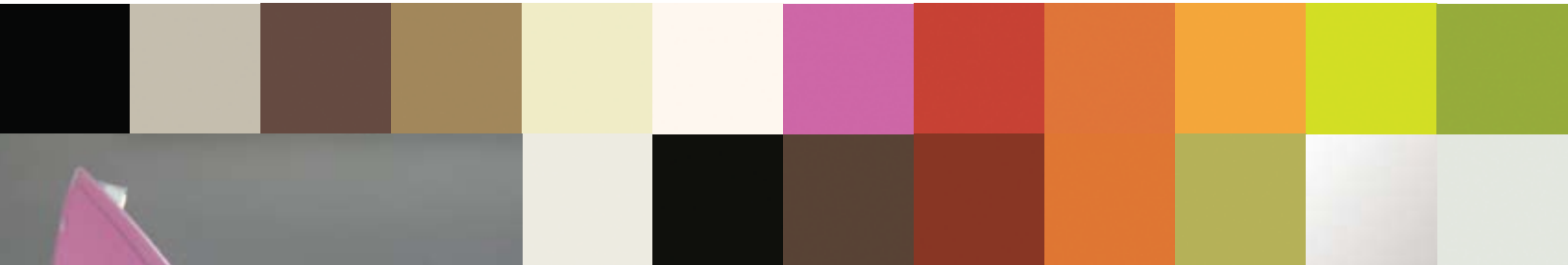
Gallery Collection



Menlo Side Chair C-C-3720
 Stacking chair with square tubular steel frame, available with aluminum coating satin finish or lacquered (6 colors) finish. Bi-material (acrylic/polycarbonate) injection molded staves. Indoor/outdoor. Stacks 10 high.
 H 31¾" D 20½" W 18½" SH 18¼" 12 lbs



MENLO



Menlo Stool C-C-3721
 Stool with square tubular steel frame, available with aluminum coating satin finish or lacquered (6 colors) finish. Bi-material (acrylic/polycarbonate) injection molded staves. Indoor/outdoor. Counter or bar height.
 H30" D 18¼" W 16¼" SH 26" 13 lbs
 H34" D 18¼" W 16¼" SH 30" 15 lbs



Menlo Armchair C-C-3722
 Armchair with square tubular steel frame, available with aluminum coating satin finish or lacquered (6 colors) finish. Bi-material (acrylic/polycarbonate) injection molded staves. Indoor/outdoor.
 H 31¾" D 20½" W 20½"
 SH 18¼" AH 26¼"